



Central University of Himachal Pradesh

(ESTABLISHED UNDER CENTRAL UNIVERSITIES ACT 2009)

Dharamshala, Himachal Pradesh-176215



NAAC Criterion-I

Key Indicator – 1.4.2

Stakeholder feedback analysis report

1.4.2 Evidences



Department of Chemistry and Chemical Science
Central University of Himachal Pradesh, Dharamshala,
Kangra



Central University of Himachal Pradesh

(ESTABLISHED UNDER CENTRAL UNIVERSITIES ACT 2009)

Dharamshala, Himachal Pradesh-176215



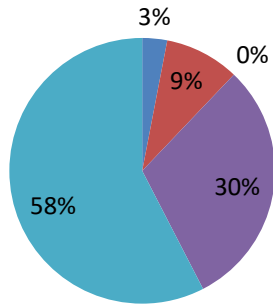
INDEX

Department of Chemistry and Chemical Science

S. No.	DESCRIPTION	PageNo.
1	Feedback analysis of students	1-10
2	Feedback analysis of employer	11-16

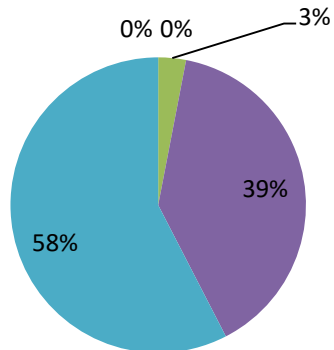
1. How much of the syllabus was covered in the class ?

■ Far form satisfied ■ not satisfied ■ satisfied ■ Happy ■ Very Happy

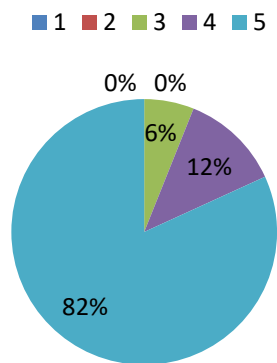


2. How well did the teachers prepare for the Classes ?

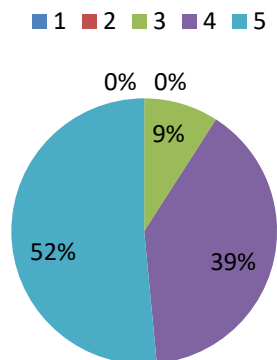
■ 1 ■ 2 ■ 3 ■ 4 ■ 5



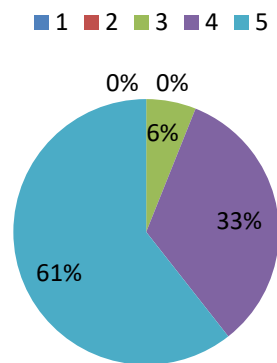
3. How well were the teachers able to communicate ?



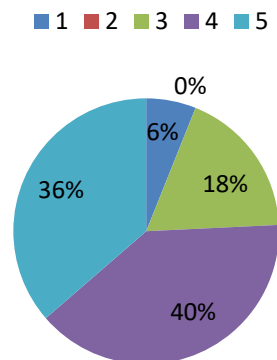
4. The teacher's approach to teaching can best be described as



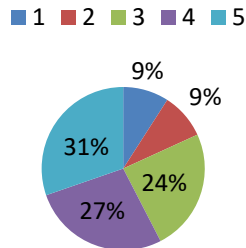
5. Fairness of the internal evaluation process by the teachers



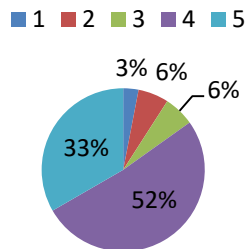
6. Was your performance in assignments discussed with you ?



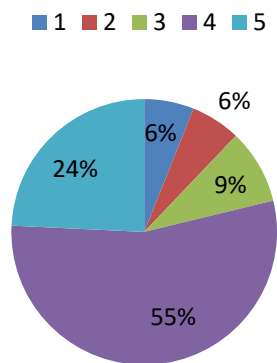
7. The institutes takes active interest in promoting internship, student exchange, field visit opportunities for students



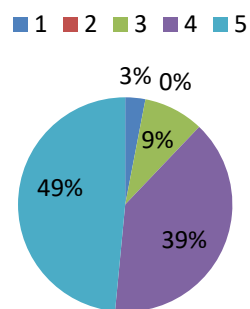
8. The teaching and mentoring process in your institution facilitates you in cognitive, social and emotional growth



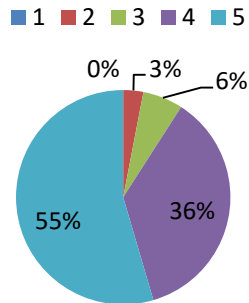
9. The university provides multiple opportunities to learn and grow



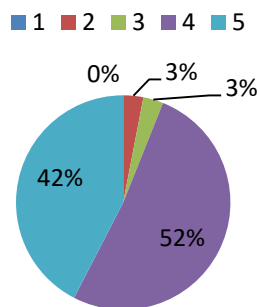
10. Teachers inform you about your expected competencies, course outcomes and programme outcomes



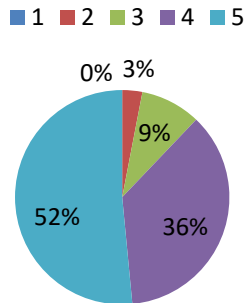
11. Your mentor does a necessary follow up with an assigned task to you



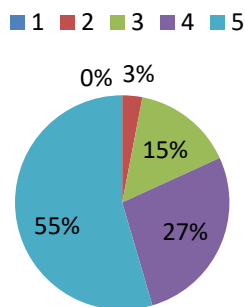
12. The teachers illustrate the concepts through examples and publications



13. The teachers identify your strengths and encourage you with providing right level of challenges

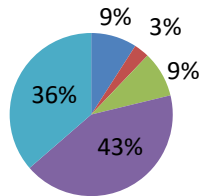


14. Teachers are able to identify your weaknesses and help you to overcome them



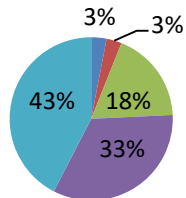
15. The university makes effort to engage students in the monitoring, review and continuous quality improvement of the teaching...

■ 1 ■ 2 ■ 3 ■ 4 ■ 5

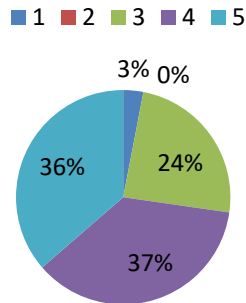


16. The university/teachers use student centric method, such as experimental learning, participative learning and problem solving...

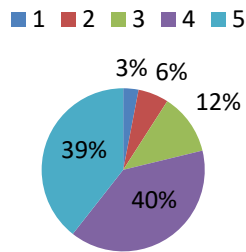
■ 1 ■ 2 ■ 3 ■ 4 ■ 5



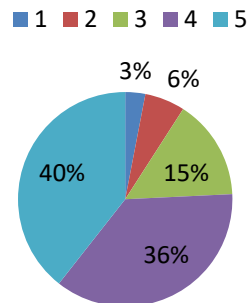
17. Students encourage you to participate in extra curricular activities



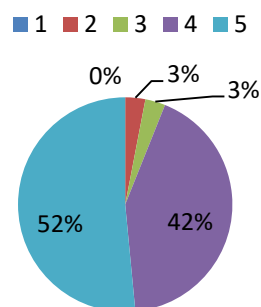
18. Efforts are made by the university / teachers to inculcate soft skills, life skills and employability skills to make you ready for the world of work



19. What percentage of teachers use ICT tools such as LCD projector, multimedia, etc. While teaching

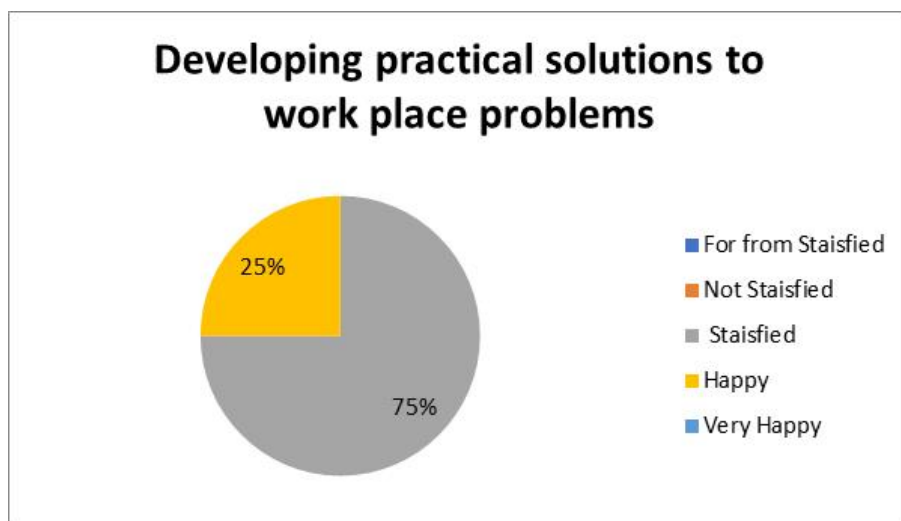
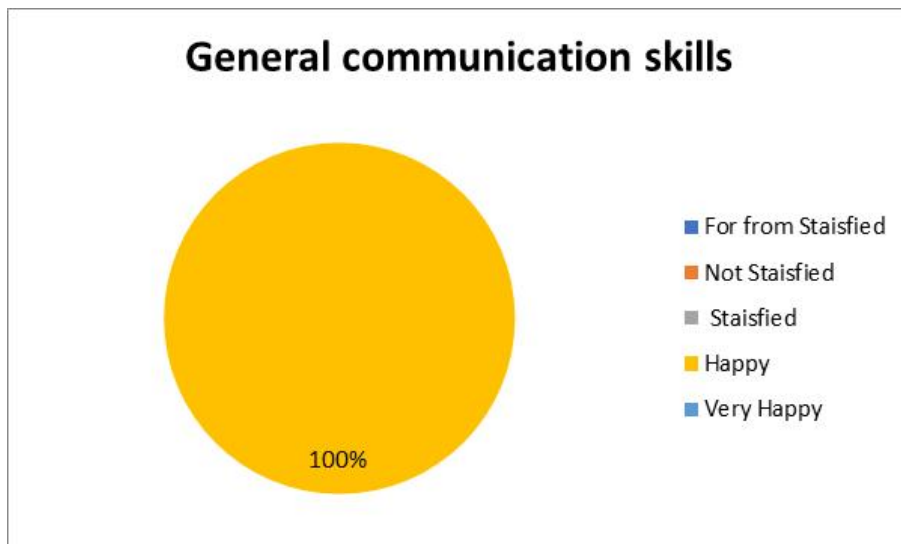


20. The overall quality of teaching-learning process in your university is very good

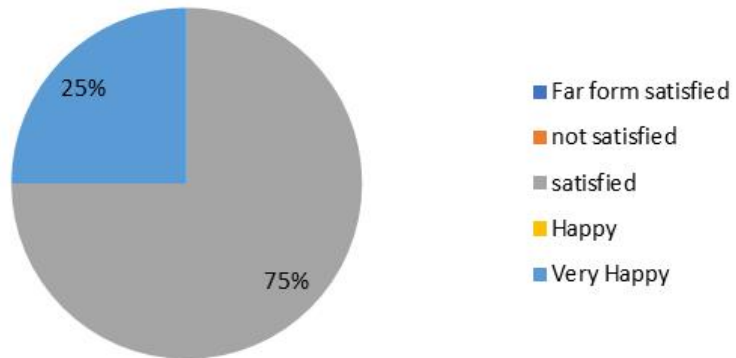


Department of Chemistry and Chemical Sciences

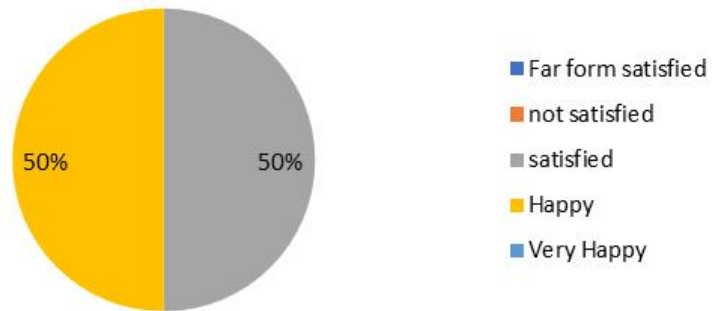
Analysis of Employer Feedback



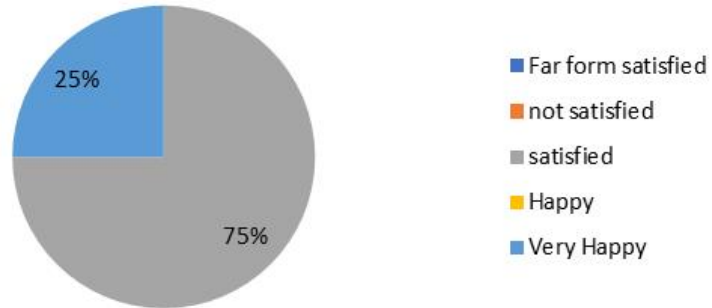
Working as part of a team



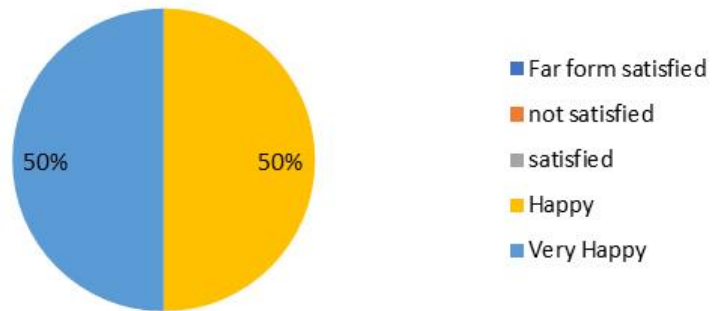
Creative in response to workplace challenges



Self-motivated and taking on appropriate level of responsibility



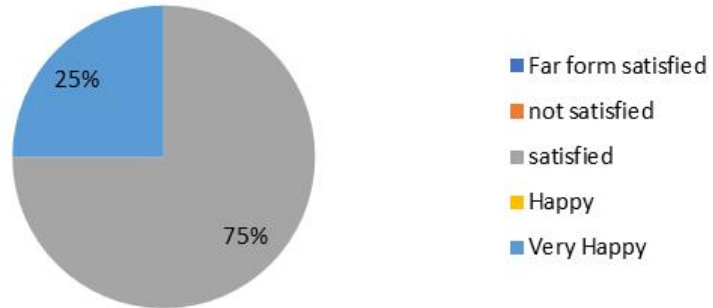
Open to new ideas and learning new techniques



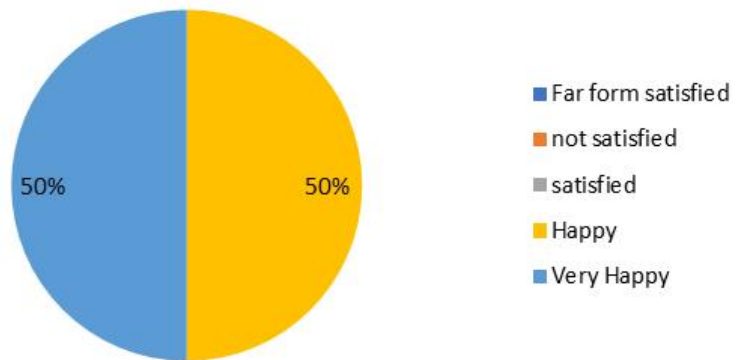
Using technology and workplace equipment



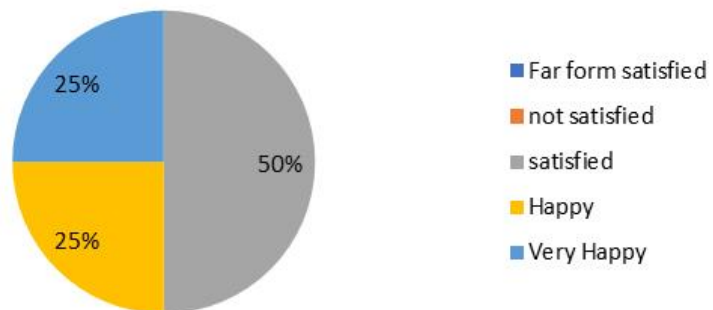
Ability to contribute to the goal of the organization



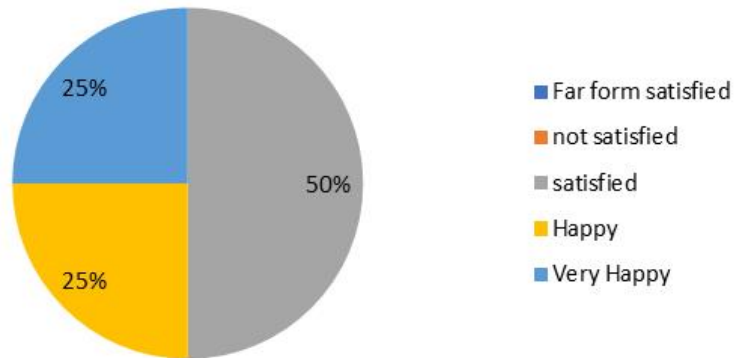
Technical knowledge/skill



Ability to manage/leadership qualities



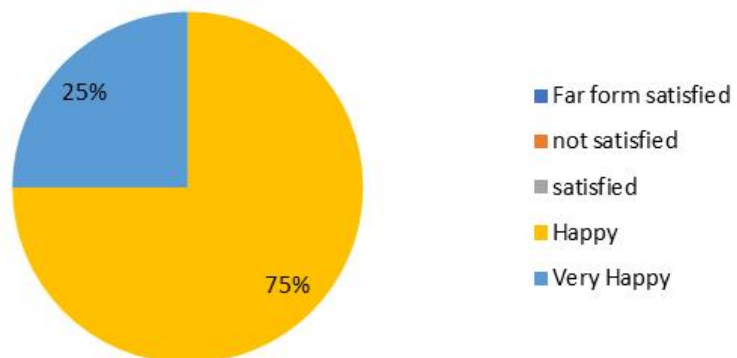
Innovativeness, creativity



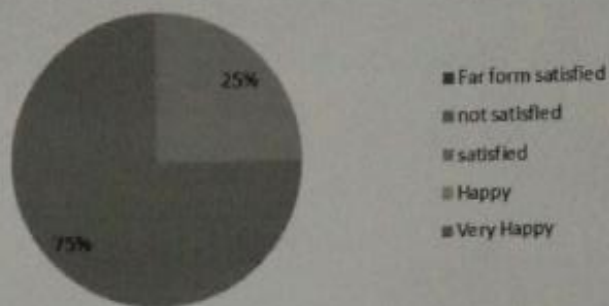
Relationship with seniors/peers/subordinates



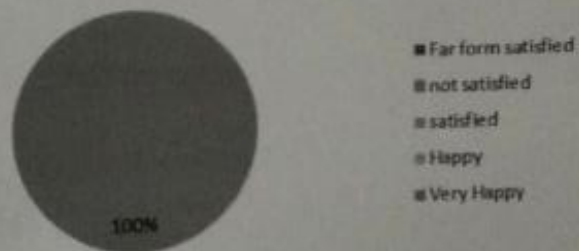
Involvement in social activities



Ability to take up extra responsibility



Obligation to work beyond schedule if required



नागाध्यक्ष, रसायन एवं रसायनिक विज्ञान विभाग
Head, Dept. of Chemistry & Chemical Science
शहापुर प्रदेश केंद्रीय विश्वविद्यालय
Central University of Himachal Pradesh
स्थायी शैक्षणिक ब्लॉक / Temporary Academic Block
शहापुर (हि.प्र.) / Shahpur, Kangra (H.P.)